

PHISON

FMS 2025 Media Update 2H2025



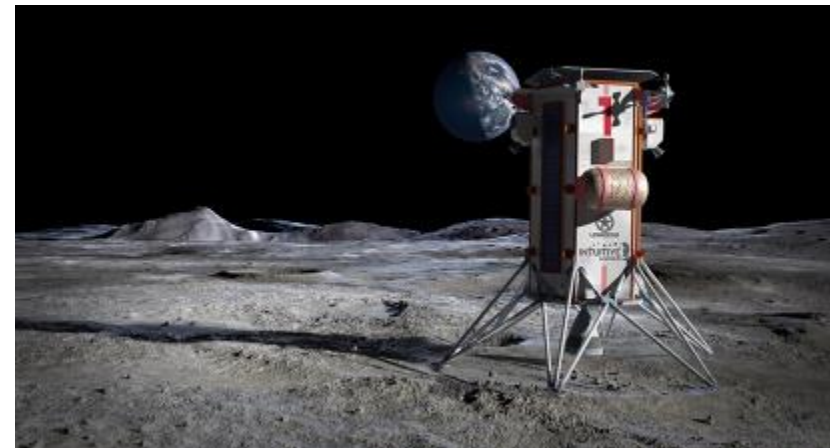
PHISON

FMS 2025



PASCARI

X200
X200Z
D200
D205V



E28

2025 Flagship PCIe
Gen5 SSD



aiDAPTIV⁺

- ✓ Affordable
- ✓ Private
- ✓ Smarter AI



Quick Facts about Phison



\$1.8B

2024 Revenue



25

Years Experience

Business Focus

Enterprise

AI

Client

Industrial



+18%+

Global SSD Market Share



5000+HC

75% R&D

Expanding our team while retaining key talent

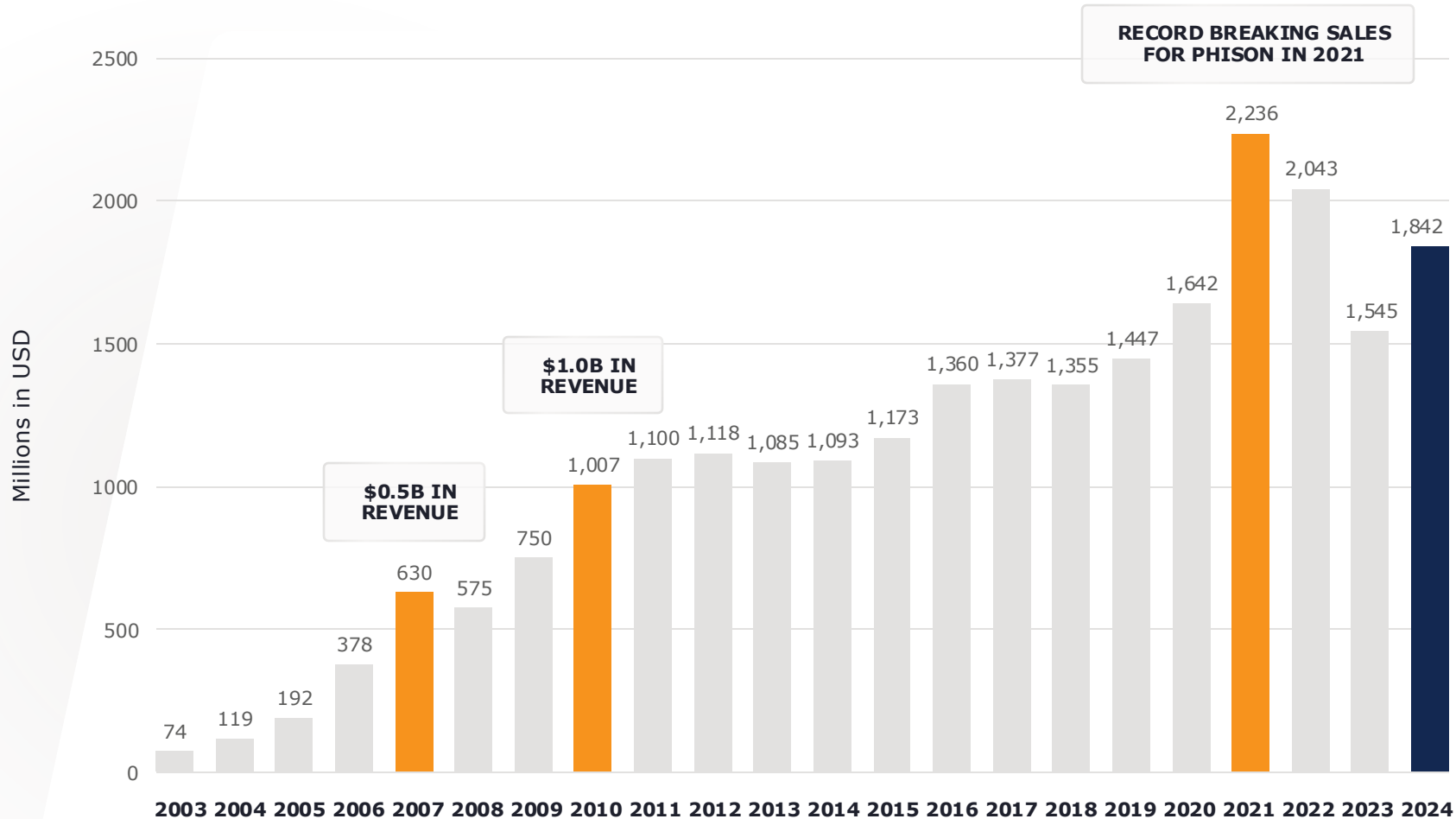


80%

R&D Exp. / OPEX

Employee expertise comes from our heavy R&D spend

Phison is a Technology Leader in NAND Storage



Six World Firsts

Fastest Gen5 SSD
2023

Fastest Gen4 SSD
2021

Highest Capacity 2.5" SSD
2020

First Gen4 QLC SSD
2020

Highest Capacity M.2
2020

First Gen4 SSD
2019

Global Support Map



Phison Serves the World's Largest Storage OEMs

NAND flash makers are Phison's customers and suppliers

KIOXIA

micron

SAMSUNG

SK hynix

SANDISK

 **SOLIDIGM**

**Data
center**

**PC
OEM**

**Space
Missions**

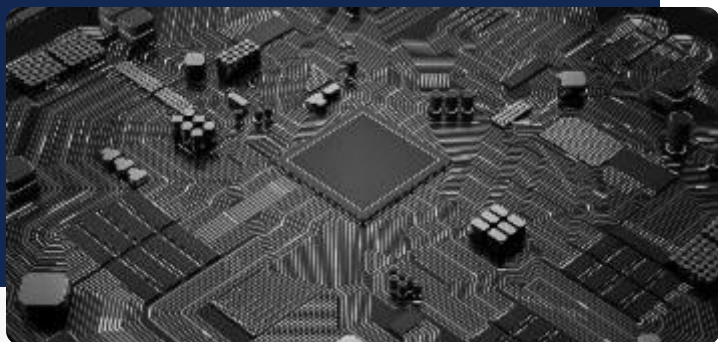
Automotive

**Industrial
Embedded**

**NAND
Storage
Private
Label**

**IP
Licensing**

One-of-a-kind Business Model

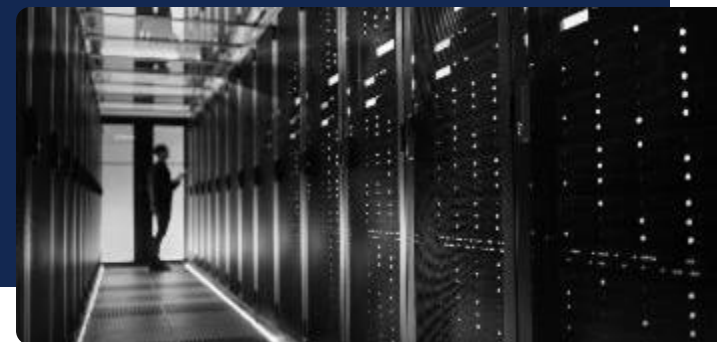


Controller ASICs

- Best Partner for NAND Storage
- Support Multiple NAND Partners
- Sophisticated ASIC Knowledge
- Cutting-Edge ECC Design

Enterprise SSDs

- Manufacture Complete SSDs
- Own Controller, F/W, PCBA Layout, PMIC
- System-Level Validation



Design

- Comprehensive IP Library
- TSMC/UMC Process
- Software Development Kit



Enterprise Updates

Pascari Enterprise SSD Product Line-up

Tailored for Any Enterprise Workload

HIGH PERFORMANCE

X-Series

High-Endurance PCIe Gen5
Enterprise SSD for
Write-Intensive Applications

Specifications

- Interface: PCIe 5.0
- Form Factor: U.2, E3.S
- DWPD: Up to 60
- Capacity: Up to 30.72 TB
- MTBF: 2.5 million hours
- Warranty: 5 years

Use Cases

- AI/ML Training & Inferencing
- Financial Services
(High-Frequency Trading)
- High-Performance Computing (HPC)



DATA CENTER

D-Series

Ultra-High-Capacity PCIe Gen5
Data Center SSD for
Lower OPEX

Specifications

- Interface: PCIe 5.0
- Form Factor: U.2, E1.S, E3.S, E3.L
- DWPD: Up to 3
- Capacity: Up to 122.88 TB
- MTBF: 2.5 million hours
- Warranty: 5 years

Use Cases

- Hyperscale Cloud Environments
- Network Attached Storage (NAS)
- Warm Data Storage, Archiving



SATA

S-Series

High-Endurance SATA SSD for
Enterprise Applications

Specifications

- Interface: SATA III
- Form Factor: 2.5"
- DWPD: 0.4, 1, 3
- Capacity: up to 15.36 TB
- MTBF: 2.0 million hours
- Warranty: 5 years

Use Cases

- Legacy System Upgrades
(HDD to SSD transition)
- General Purpose Enterprise
Storage (mass-market NAS)
- Cost-sensitive Workloads



BOOT DRIVE

B-Series

Boot Drive for Servers and
Workstations

Specifications

- Interface: SATA III
- Form Factor: 2.5", M.2 2280
- DWPD: 1
- Capacity: Up to 960 GB
- MTBF: 2.0 million hours
- Warranty: 5 years

Use Cases

- Rapid OS and System Boot
for Enterprise Servers and
Workstations
- SATA Boot Drive for Legacy
Systems and System Upgrades



ARTIFICIAL INTELLIGENCE

AI-Series

Cost-Effective Onsite LLM Training and
Enhanced Inferencing with Turnkey
aiDAPTIV+ Solutions

Specifications

- Interface: PCIe 4.0
- Form Factor: M.2 2280
- DWPD: Up to 100
- SLC NAND with Advanced NAND
Correction Algorithm
- Warranty: 5 years

Features

- Supports a Wide Range of Models
- aiDAPTIV+ AI-Optimized Firmware
- Optimized Middleware to Extend
GPU Memory Capacity



Pascari X200 Series Product Overview



X200 Series SSD

The best PCIe Gen5 performance, features, endurance, and economics for enterprise applications. The X200 shows Phison's dedication to developing advanced SSD technology to lead the industry in density, performance, and power efficiency for all mass-capacity storage providers.

Specifications

- Interface: PCIe 5.0 x 4
- Protocol: NVMe 2.0
- Capacity: Up to 30.72TB
- Form Factor: U.2 / E3.S
- DWPD: 1 and 3 DWPD
- MTBF: 2.5 million hours
- Warranty: 5 years







Features

- Dual-port design
- Ultra-low latency
- Power loss Protection
- MF-QoS
- Namespaces: 128



Performance

Seq. Read		14,800 MB/s
Seq. Write		8,700 MB/s
Ran. Read		3,200K IOPS
Ran. Write		930K IOPS

Pascari X200Z Series Product Overview



X200Z Series SSD

The ultimate high-endurance storage solution X200Z redefines performance and reliability. Built for caching tier of storage hierarchy, X200Z features ultra high endurance, ensuring it can handle even the most demanding workloads with ease. Leveraging PCIe 5.0 for blazing fast speeds, X200Z delivers unmatched performance while maintaining durability and consistency.

Specifications

- Interface: PCIe 5.0 2x2
- Protocol: NVMe 2.0
- Capacity: Up to 3.2TB
- Form Factor: U.2
- DWPD: 60 DWPD
- MTBF: 2.5 million hours
- Warranty: 5 years



Features

- Dual-port design
- Ultra-low latency
- Power loss Protection
- MF-QoS
- Namespaces: 128



Performance

Seq. Read		14,800 MB/s
Seq. Write		9,500 MB/s
Ran. Read		3,000K IOPS
Ran. Write		950K IOPS

D200V/D205V Series Product Overview

New! Pascari D205V E3.L Showcase at Supermicro FMS Booth



D200V/D205V QLC SSD

Phison's D200V/D205V series utilize QLC technology to meet the high storage density demand driven by AI. With an impressive 122TB per SSD, D205V will help drive the trend of efficient data storage with improved space utilization and reduced power consumption.



Specifications

- Interface: PCIe 5.0 x 4
- Protocol: NVMe 2.0
- Form Factor: U.2 / E3.S / E3.L
- DWPD: 0.3 DWPD
- MTBF: 2.5 million hours
- Warranty: 5 years



Features

- 3D QLC NAND
- Dual-port design
- Power loss Protection
- Namespaces: 128



Capacity

- D200V:**
 - 30.72TB
 - 61.44TB
- D205V:**
 - 122.88TB

PHISON

aiDAPTIV+ Update



The Future of Memory and Storage

LLM Training and Inference at Any Budget



IoT Device

Up to 1B
Parameter
Full Model
Training

\$500-2,000



Laptop PC

Up to 8B
Parameter
Full Model Training

\$2,000-4,000



Desktop PC

Up to 13B Parameter
Full Model Training

\$3,000-5,000



Workstation PC

Up to 100B
Parameter
Full Model Training

\$5,000-50,000



Server & Storage

Up to 671B Parameter
Full Model Training

\$50,000+

AVerMedia

MAINGEAR



msi

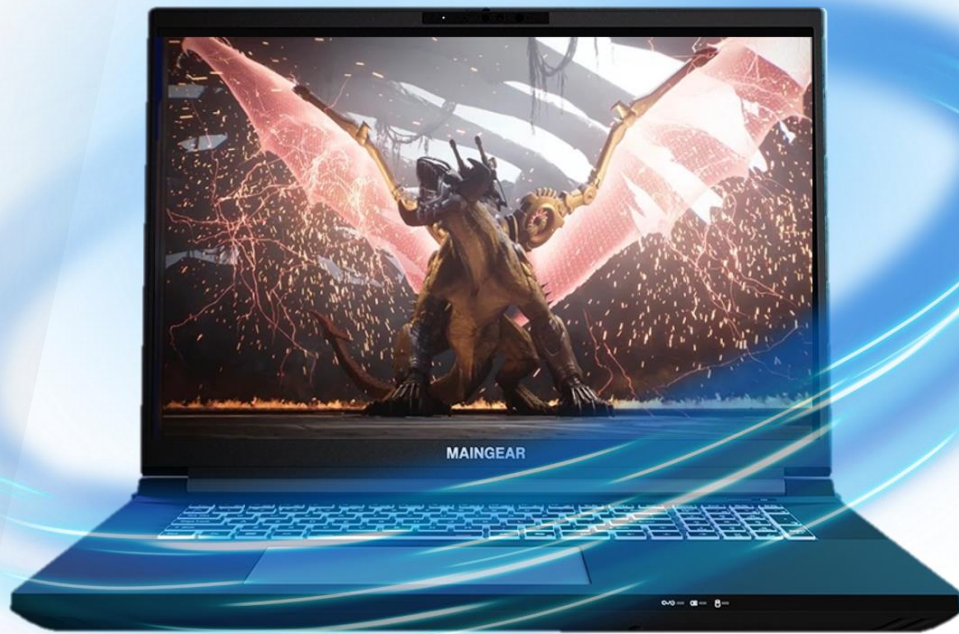
storONE
THINK RESULTS™

PHISON

Demo Partners

FMS
the Future of Memory and Storage

Fine-Tune Training and Inference On The Go



- **Mobile Workstation Design**
- **Fine-Tune Training up to 70B Full Parameter Models**
- **Inference up to 8B Full Parameter Models**
- **NVIDIA 5090 Mobile GPU with 24GB GDDR7**
- **Available Q3 2025**

Client SSD Update

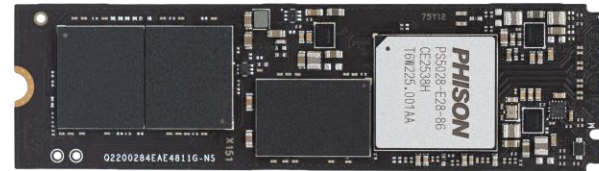


PS5028-E28

The Weapon of Choice for Serious Gaming and Productivity

- PCIe Gen5x4
- TSMC 6nm process
- LPDDR4
- 8-channel with 32 CEs
- Capacity up to 32TB
- 3D TLC supported
- Quad-CPU architecture
- Phison 8th Gen LDPC & RAID ECC
- AES-256 / TCG Opal / Pyrite
- Form Factor: M.2 2280

M.2 2280



Performance

Seq. Read	<div></div>	14,800 MB/s
Seq. Write	<div></div>	14,000 MB/s
Ran. Read	<div></div>	2,600K IOPS
Ran. Write	<div></div>	3,000K IOPS

PS5031-E31T

Gen5 Speed and Efficiency for All Devices

- PCIe Gen5x4
- TSMC 7nm process
- DRAM-less Design
- 4-channel with 16 CEs
- Capacity up to 4TB
- 3D TLC supported
- ARM Cortex R5 CPU
- Phison 7th Gen LDPC & RAID ECC
- AES-256 / TCG Opal / Pyrite
- Form Factor: M.2 2280 / M.2 2242 / M.2 2230



M.2 2230



M.2 2242



M.2 2280

Performance

Seq. Read		10,300 MB/s
Seq. Write		8,600 MB/s
Ran. Read		1,300K IOPS
Ran. Write		1,500K IOPS

PHISON

Thank you



the Future of Memory and Storage